



# Kollewin Technology CO., Limited

Address: Room#22E, Unit D, BaiHe Hotel Building, Shenhui Road, Buji, LongGang, Shenzhen, China 518112

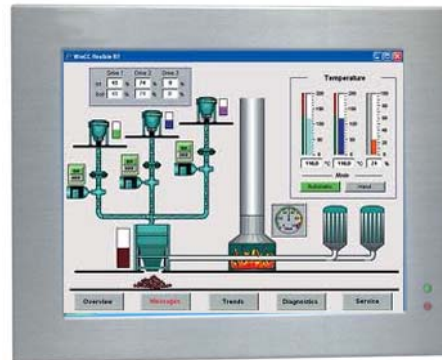
Website: <http://www.kollewin.com>  
 TEL: 86-755-26898905

Email: [sales@kollewin.com](mailto:sales@kollewin.com)  
[redpeachluo@gmail.com](mailto:redpeachluo@gmail.com)

Specifications (panel colors silver or black optional)	Picture	Price
<b>Kollewin 15" TFT LCD Industrial touch panel PC: KW-P3715HT-T7200</b> <b>Shell:</b> Professional IP65 grade brushed aluminum alloy panel, heavy steel shock box, vacuum dust cooling system; <b>Display:</b> Touch 15" TFT Industrial grade highlighted, 1024*768, Support asynchronous VGA+LCD display; <b>Installation:</b> support panel flush mounting, VESA 75 installation, VESA 100 installation; <b>Dimensions:</b> Dimensions=398*308*88.5(W*H*D), Hole size=375*291(W*H); <b>System Security:</b> programmable hardware watchdog protection system security and stability of 7 * 24 hours continuous operation; <b>Main Chipset:</b> Intel 945GM+ICH7-M, Onboard Intel Core2 Duo T7200 processor; <b>Vedio:</b> High-speed graphics engine Intel GMA950, DVMT memory support to 224MB; <b>Ethernet:</b> Two high-speed Gigabit Industrial Ethernet adapter support PXE and WOL, RJ45 port; <b>Audio:</b> ALC888 HD Audio Codec (Line_out; Mic_in); <b>Interface:</b> 3 x RS-232, 3 x RS-232/485, 6 x USB2.0, 1 x LPT; <b>Expansion Slots:</b> One PCI expansion slot, One Mini PCI-e X 1 expansion slot; <b>Power:</b> 6~30VDC wide voltage input;; <b>Temperature:</b> Operating Temperature -10 °C ~ 60 °C, Storage temperature -40 °C ~ 80 °C; <b>Applications:</b> 7 * 24 hours of uninterrupted work in harsh environments (high dust, high temperature, complex electromagnetic environment); Acceptable customized for OEM or ODM custom production  <b>C P U:</b> Intel Core2 Duo T7200 2.0GHz Core Duo 64-bit processors; <b>System memory:</b> Dual-channel DDRII 1GB(Can be customized); <b>System Storage:</b> 250GB SATAII 2.5" Hard Disk(Can be customized);		\$1, 222

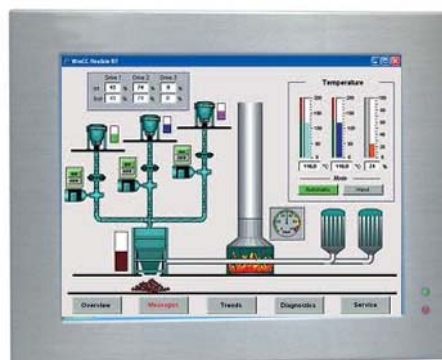
<b>Kollewin 15" TFT LCD Industrial touch panel PC: KW-P3715HT-D525</b> <b>Shell:</b> Professional IP65 grade brushed aluminum alloy panel, heavy steel shock box, vacuum dust cooling system; <b>Display:</b> Touch 15" TFT Industrial grade highlighted, 1024*768, Support asynchronous VGA+LCD display; <b>Installation:</b> support panel flush mounting, VESA 75 installation, VESA 100 installation; <b>Dimensions:</b> Dimensions=398*308*88.5(W*H*D), Hole size=375*291(W*H); <b>System Security:</b> programmable hardware watchdog protection system security and stability of 7 * 24 hours continuous operation; <b>Main Chipset:</b> Intel Atom D525+NM10, Onboard Intel Atom D525 processor; <b>Vedio:</b> High-speed graphics engine Intel GMA3150, DVMT memory support to 224MB; <b>Ethernet:</b> Two high-speed Gigabit Industrial Ethernet adapter support PXE and WOL, RJ45 port; <b>Audio:</b> ALC662 HD Audio Codec (Line_out; Mic_in); <b>Interface:</b> 5 ↑ RS-232, 1 x RS-232/485, 6 x USB2.0; 1 x LPT port; <b>Expansion Slots:</b> One PCI expansion slot; <b>Power:</b> 12VDC(or 9~18VDC wide voltage input;); <b>Temperature:</b> Operating Temperature -10 °C ~ 60 °C, Storage temperature -40 °C ~ 80 °C; <b>Applications:</b> 7 * 24 hours of uninterrupted work in harsh environments (high dust, high temperature, complex electromagnetic environment); Acceptable customized for OEM or ODM custom production  <b>C P U:</b> Intel Dual-core Atom D525 1.8GHz Dual-core, four threads, 64-bit processors; <b>System memory:</b> Dual-channel DDR3 2GB(Can be customized); <b>System Storage:</b> 250GB SATAII 2.5" Hard Disk(Can be customized);		\$1, 120
--	--	----------

<b>Kollewin 17" TFT LCD Industrial touch panel PC:KW-P3817HT-T7200</b>
<b>Shell:</b> Professional IP65 grade brushed aluminum alloy panel, heavy steel shock box, vacuum dust cooling system;
<b>Display:</b> Touch 17" TFTIndustrial grade highlighted,1280*1024,Support asynchronous VGA+LCD display;
<b>Installation:</b> support panel flush mounting,VESA 75 installation,VESA 100 installation;
<b>Dimensions:</b> Dimensions=434*342*88.5(W*H*D),Hole size=411*325(W*H);
<b>System Security:</b> programmable hardware watchdog protection system security and stability of 7 * 24 hours continuous operation;
<b>Main Chipset:</b> Intel 945GM+ICH7-M,Onboard Intel Core2 Duo T7200 processor;
<b>Vedio:</b> High-speed graphics engine Intel GMA950, DVMT memory support to 224MB;
<b>Ethernet:</b> Two high-speed Gigabit Industrial Ethernet adapter support PXE and WOL, RJ45 port;
<b>Audio:</b> ALC888 HD Audio Codec (Line_out;Mic_in);
<b>Interface:</b> 3 x RS-232,3 x RS-232/485,6 x USB2.0,1 x LPT;
<b>Expansion Slots:</b> One PCI expansion slot,One Mini PCI-e X 1 expansion slot;
<b>Power:</b> 6~30VDC wide voltage input;;
<b>Temperature:</b> Operating Temperature -10 °C ~ 60 °C, Storage temperature -40 °C ~ 80 °C;
<b>Applications:</b> 7 * 24 hours of uninterrupted work in harsh environments (high dust, high temperature, complex electromagnetic environment);
Acceptable customized for OEM or ODM custom production
<b>C P U:</b> Intel Core2 Duo T7200 2.0GHz Core Duo 64-bit processors;
<b>System memory:</b> Dual-channel DDRII 1GB(Can be customized);
<b>System Storage:</b> 250GB SATAII 2.5" Hard Disk(Can be customized);



\$1,323

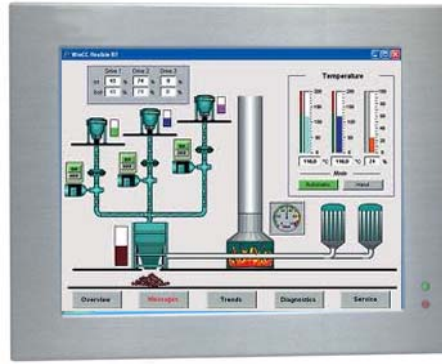
<b>Kollewin 17" TFT LCD Industrial touch panel PC:KW-P3817HT-D525</b>
<b>Shell:</b> Professional IP65 grade brushed aluminum alloy panel, heavy steel shock box, vacuum dust cooling system;
<b>Display:</b> Touch 17" TFTIndustrial grade highlighted,1280*1024,Support asynchronous VGA+LCD display;
<b>Installation:</b> support panel flush mounting,VESA 75 installation,VESA 100 installation;
<b>Dimensions:</b> Dimensions=434*342*88.5(W*H*D),Hole size=411*325(W*H);
<b>System Security:</b> programmable hardware watchdog protection system security and stability of 7 * 24 hours continuous operation;
<b>Main Chipset:</b> Intel Atom D525+NM10,Onboard Intel Atom D525 processor;
<b>Vedio:</b> High-speed graphics engine Intel GMA3150, DVMT memory support to 224MB;
<b>Ethernet:</b> Two high-speed Gigabit Industrial Ethernet adapter support PXE and WOL, RJ45 port;
<b>Audio:</b> ALC662 HD Audio Codec (Line_out;Mic_in);
<b>Interface:</b> 5 ↑ RS-232,1 x RS-232/485,6 x USB2.0;1 x LPT port;
<b>Expansion Slots:</b> One PCI expansion slot;
<b>Power:</b> 12VDC(or 9~18VDC wide voltage input;);
<b>Temperature:</b> Operating Temperature -10 °C ~ 60 °C, Storage temperature -40 °C ~ 80 °C;
<b>Applications:</b> 7 * 24 hours of uninterrupted work in harsh environments (high dust, high temperature, complex electromagnetic environment);
Acceptable customized for OEM or ODM custom production
<b>CPU:</b> Intel Dual-core Atom D525 1.8GHz Dual-core, four threads, 64-bit processors;
<b>System memory:</b> Dual-channel DDR3 2GB(Can be customized);
<b>System Storage:</b> 250GB SATAII 2.5" Hard Disk(Can be customized);



\$1,222

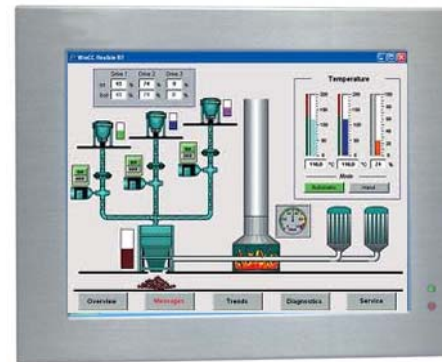


<b>Kollewin 19" TFT LCD Industrial touch panel PC:KW-P3819HT-T7200</b>
<b>Shell:</b> Professional IP65 grade brushed aluminum alloy panel, heavy steel shock box, vacuum dust cooling system;
<b>Display:</b> Touch 19" TFTIndustrial grade highlighted,1280*1024,Support asynchronous VGA+LCD display;
<b>Installation:</b> support panel flush mounting,VESA 75 installation,VESA 100 installation;
<b>Dimensions:</b> Dimensions=466*370*90(W*H*D),Hole size=443*352(W*H);
<b>System Security:</b> programmable hardware watchdog protection system security and stability of 7 * 24 hours continuous operation;
<b>Main Chipset:</b> Intel 945GM+ICH7-M,Onboard Intel Core2 Duo T7200 processor;
<b>Vedio:</b> High-speed graphics engine Intel GMA950, DVMT memory support to 224MB;
<b>Ethernet:</b> Two high-speed Gigabit Industrial Ethernet adapter support PXE and WOL, RJ45 port;
<b>Audio:</b> ALC888 HD Audio Codec (Line_out;Mic_in);
<b>Interface:</b> 3 x RS-232,3 x RS-232/485,6 x USB2.0,1 x LPT;
<b>Expansion Slots:</b> One PCI expansion slot,One Mini PCI-e X 1 expansion slot;
<b>Power:</b> 6~30VDC wide voltage input;;
<b>Temperature:</b> Operating Temperature -10 °C ~ 60 °C, Storage temperature -40 °C ~ 80 °C;
<b>Applications:</b> 7 * 24 hours of uninterrupted work in harsh environments (high dust, high temperature, complex electromagnetic environment);
Acceptable customized for OEM or ODM custom production
<b>C P U:</b> Intel Core2 Duo T7200 2.0GHz Core Duo 64-bit processors;
<b>System memory:</b> Dual-channel DDRII 1GB(Can be customized);
<b>System Storage:</b> 250GB SATAII 2.5" Hard Disk(Can be customized);

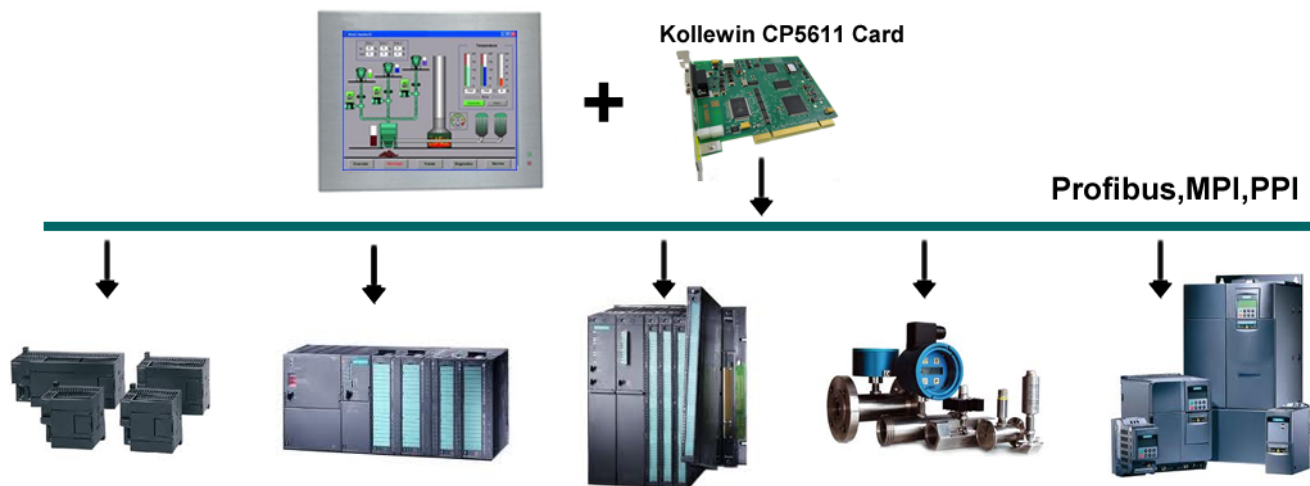


\$1,425

<b>Kollewin 19" TFT LCD Industrial touch panel PC:KW-P3819HT-D525</b>
<b>Shell:</b> Professional IP65 grade brushed aluminum alloy panel, heavy steel shock box, vacuum dust cooling system;
<b>Display:</b> Touch 19" TFTIndustrial grade highlighted,1280*1024,Support asynchronous VGA+LCD display;
<b>Installation:</b> support panel flush mounting,VESA 75 installation,VESA 100 installation;
<b>Dimensions:</b> Dimensions=466*370*90(W*H*D),Hole size=443*352(W*H);
<b>System Security:</b> programmable hardware watchdog protection system security and stability of 7 * 24 hours continuous operation;
<b>Main Chipset:</b> Intel Atom D525+NM10,Onboard Intel Atom D525 processor;
<b>Vedio:</b> High-speed graphics engine Intel GMA3150, DVMT memory support to 224MB;
<b>Ethernet:</b> Two high-speed Gigabit Industrial Ethernet adapter support PXE and WOL, RJ45 port;
<b>Audio:</b> ALC662 HD Audio Codec (Line_out;Mic_in);
<b>Interface:</b> 7 ↑RS-232,1 x RS-232/485,6 x USB2.0;1 x LPT port;
<b>Expansion Slots:</b> One PCI expansion slot;
<b>Power:</b> 12VDC(or 9~18VDC wide voltage input;);
<b>Temperature:</b> Operating Temperature -10 °C ~ 60 °C, Storage temperature -40 °C ~ 80 °C;
<b>Applications:</b> 7 * 24 hours of uninterrupted work in harsh environments (high dust, high temperature, complex electromagnetic environment);
Acceptable customized for OEM or ODM custom production
<b>CPU:</b> Intel Dual-core Atom D525 1.8GHz Dual-core, four threads, 64-bit processors;
<b>System memory:</b> Dual-channel DDR3 2GB(Can be customized);
<b>System Storage:</b> 250GB SATAII 2.5" Hard Disk(Can be customized);



\$1,323



**Remark:**

- 1.Payment: Western Union or T/T or Paypal
- 2.The goods will be delivered in 2-5 working days after the payment is received.
- 3.The quality is guaranteed.Our engineer will test one by one before shipment.
- 4.They are all OEM products.

